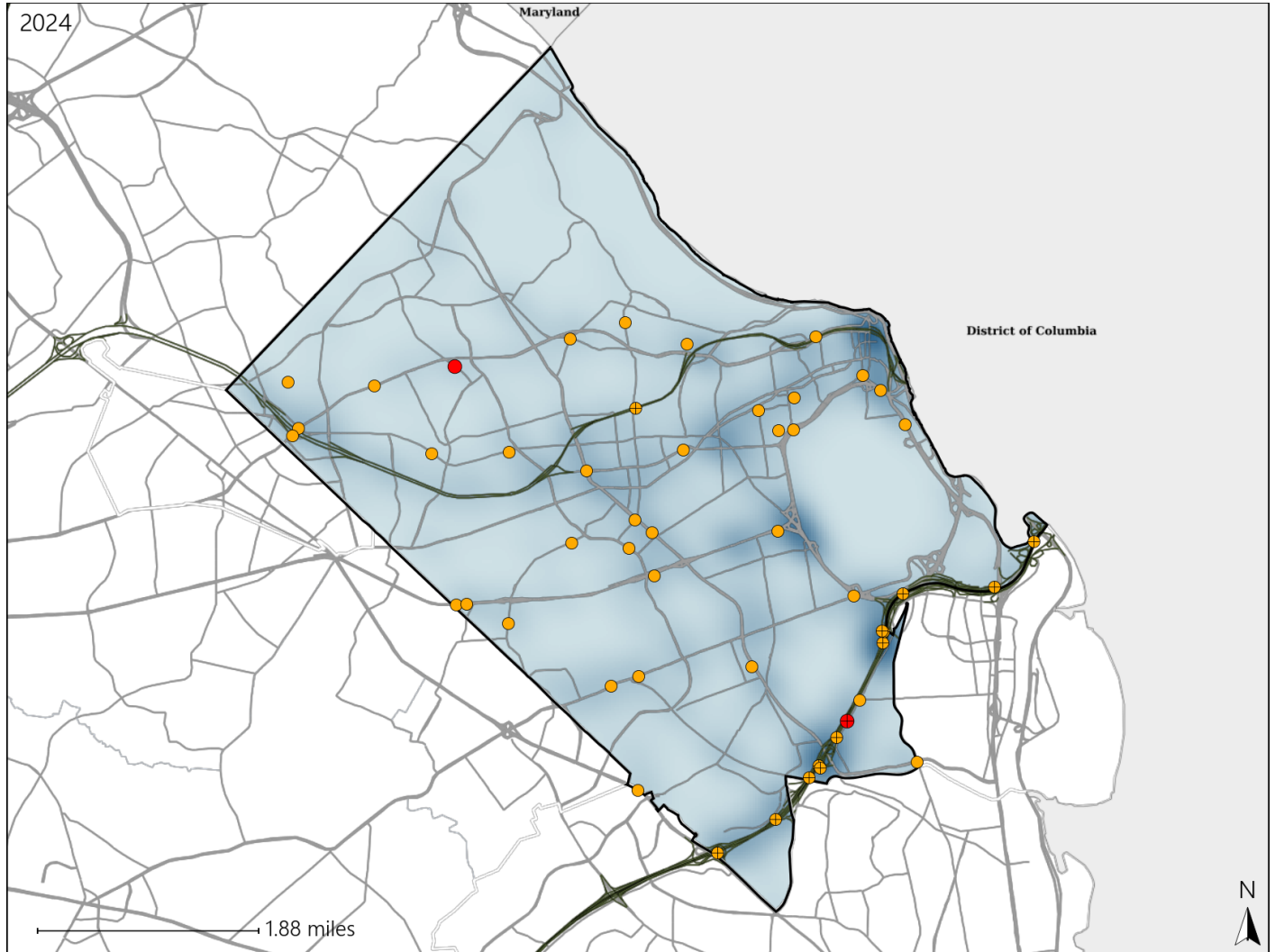


# Virginia Senate District 40 Crash Statistics

Report Generated March, 2025

	Count	Highest Time Period(s)	Highest Day(s)	Highest Month(s)
<b>Fatal Crashes</b>	<b>2</b>	3:00pm - 5:59pm Midnight - 2:59am (100%)	Saturday • Thursday (100%)	April • October (100%)
<b>Resulting Fatalities</b>	<b>2</b>			
<b>Serious Injury Crashes</b>	<b>48</b>	3:00pm - 5:59pm (21%)	Thursday (23%)	May • October (30%)



### Senate District 40 Crashes

Interstate Crashes

- Fatal
- Serious Injury

Non-interstate Crashes

- Fatal
- Serious Injury

The blue gradient represents the density of all crashes.

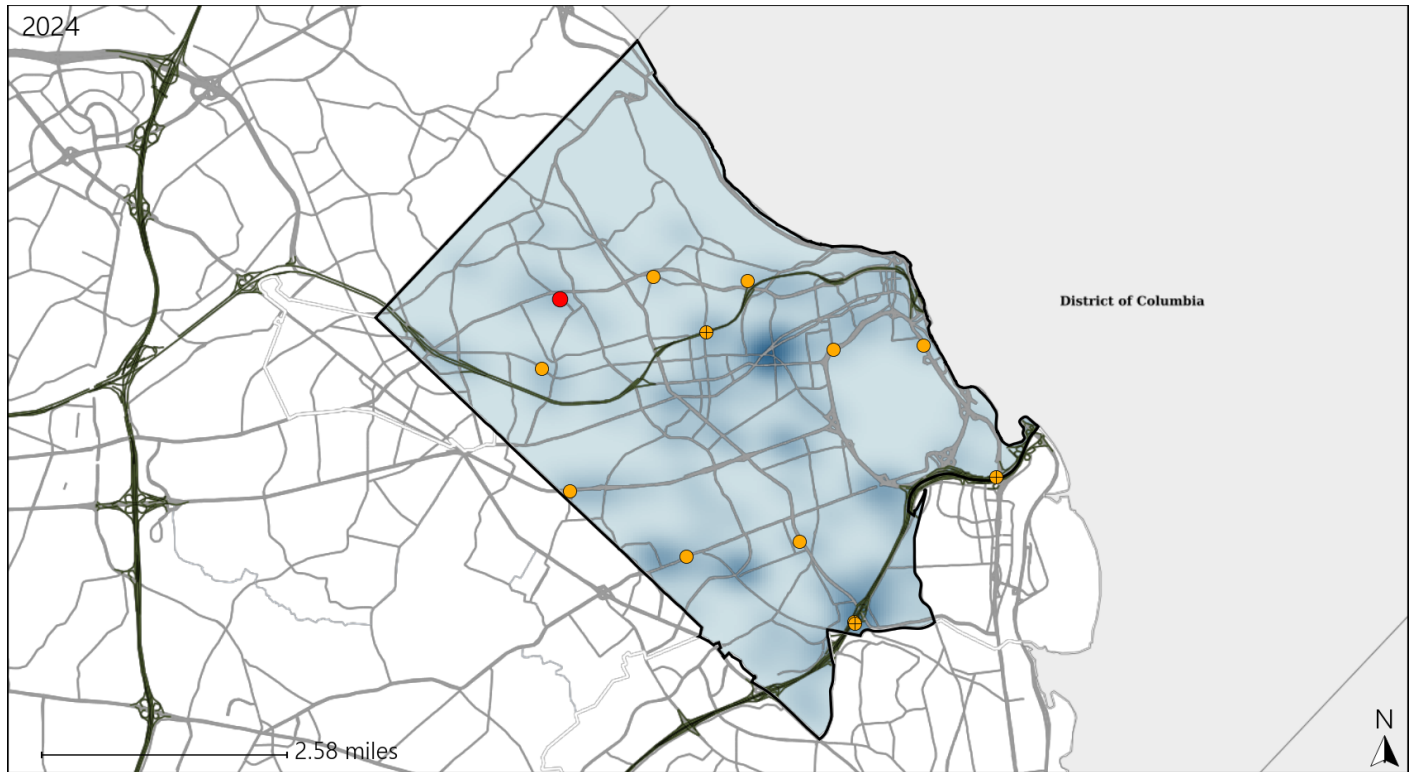


Available Crash Data - Calendar Year (CY)	CY 2021	CY 2022	CY 2023	CY 2024
Total Crashes	1456	1743	1735	1793
Fatal Crashes	4	4	6	2
Injury Crashes	430	489	465	464

# Virginia Senate District 40 Alcohol Crash Statistics

Report Generated March, 2025

	Count	Highest Time Period(s)	Highest Day(s)	Highest Month(s)
<b>Fatal Crashes</b>	<b>1</b>	<b>Midnight - 2:59am</b>	<b>Saturday</b>	<b>October</b>
<b>Resulting Fatalities</b>	<b>1</b>	(100%)	(100%)	(100%)
<b>Serious Injury Crashes</b>	<b>12</b>	<b>3:00am - 5:59am 6:00pm - 8:59pm</b>	<b>Sunday • Thursday</b>	<b>May</b>
		(50%)	(50%)	(25%)



### Senate District 40 Alcohol-Related Crashes

Interstate Crashes

Non-interstate Crashes

- Fatal
- ⊕ Serious Injury

- Fatal
- Serious Injury

The blue gradient represents the density of all alcohol-related crashes.

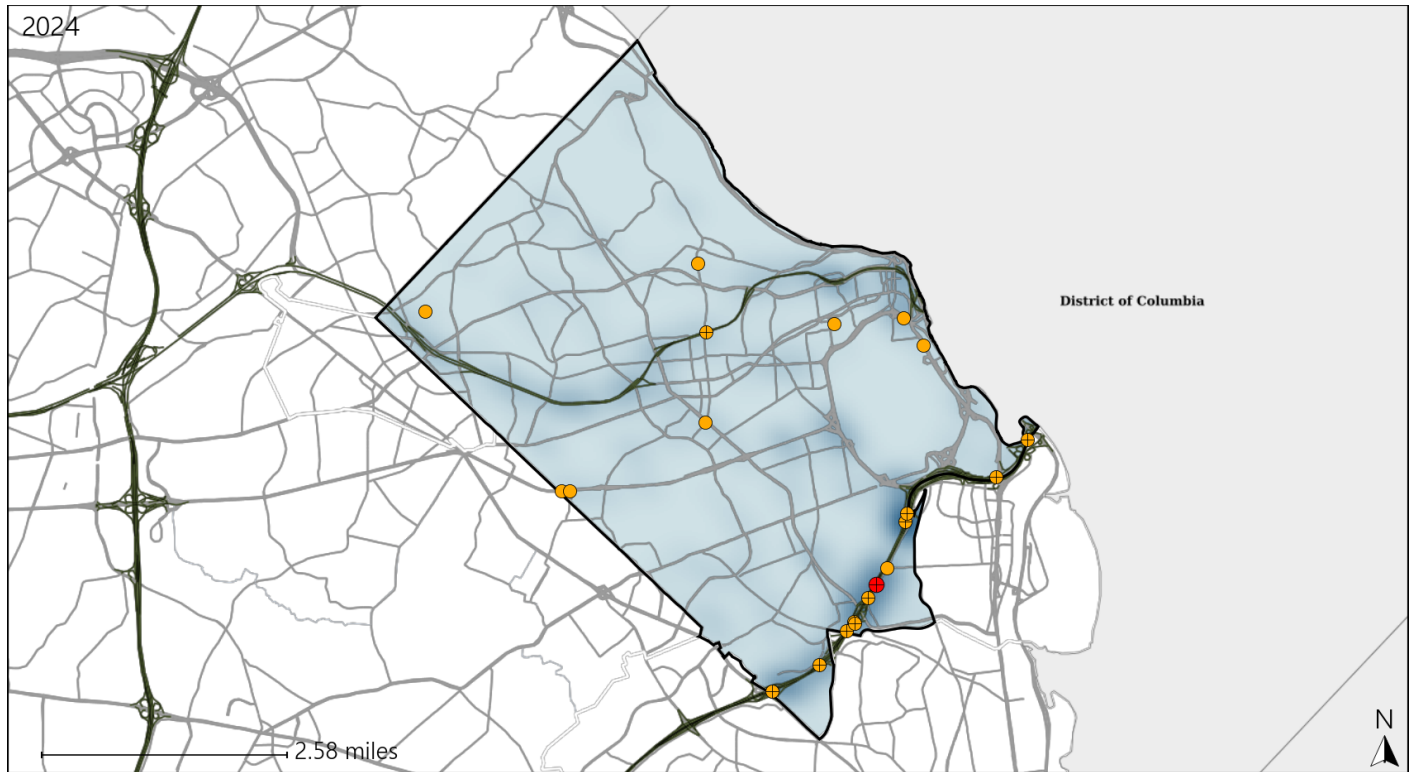


Available Crash Data - Calendar Year (CY)	CY 2021	CY 2022	CY 2023	CY 2024
Total Crashes	1456	1743	1735	1793
Fatal Crashes	4	4	6	2
Injury Crashes	430	489	465	464
Alcohol-Related Fatal Crashes	0	3	5	1
Percent of Alcohol-Related Fatal Crashes to Total Fatal Crashes	0%	75%	83%	50%
Alcohol-Related Injury Crashes	43	49	59	42
Percent of Alcohol-Related Injury Crashes to Total Injury Crashes	10%	10%	13%	9%

# Virginia Senate District 40 Speed Crash Statistics

Report Generated March, 2025

	Count	Highest Time Period(s)	Highest Day(s)	Highest Month(s)
<b>Fatal Crashes</b>	<b>1</b>	<b>3:00pm - 5:59pm</b>	<b>Thursday</b>	<b>April</b>
<b>Resulting Fatalities</b>	<b>1</b>	(100%)	(100%)	(100%)
<b>Serious Injury Crashes</b>	<b>20</b>	<b>3:00am - 5:59am</b> <b>Noon - 2:59pm</b>	<b>Sunday • Thursday</b>	<b>July • October</b>
		(40%)	(50%)	(30%)



### Senate District 40 Speed-Related Crashes

Interstate Crashes

- Fatal
- ⊕ Serious Injury

Non-interstate Crashes

- Fatal
- Serious Injury

The blue gradient represents the density of all speed-related crashes.

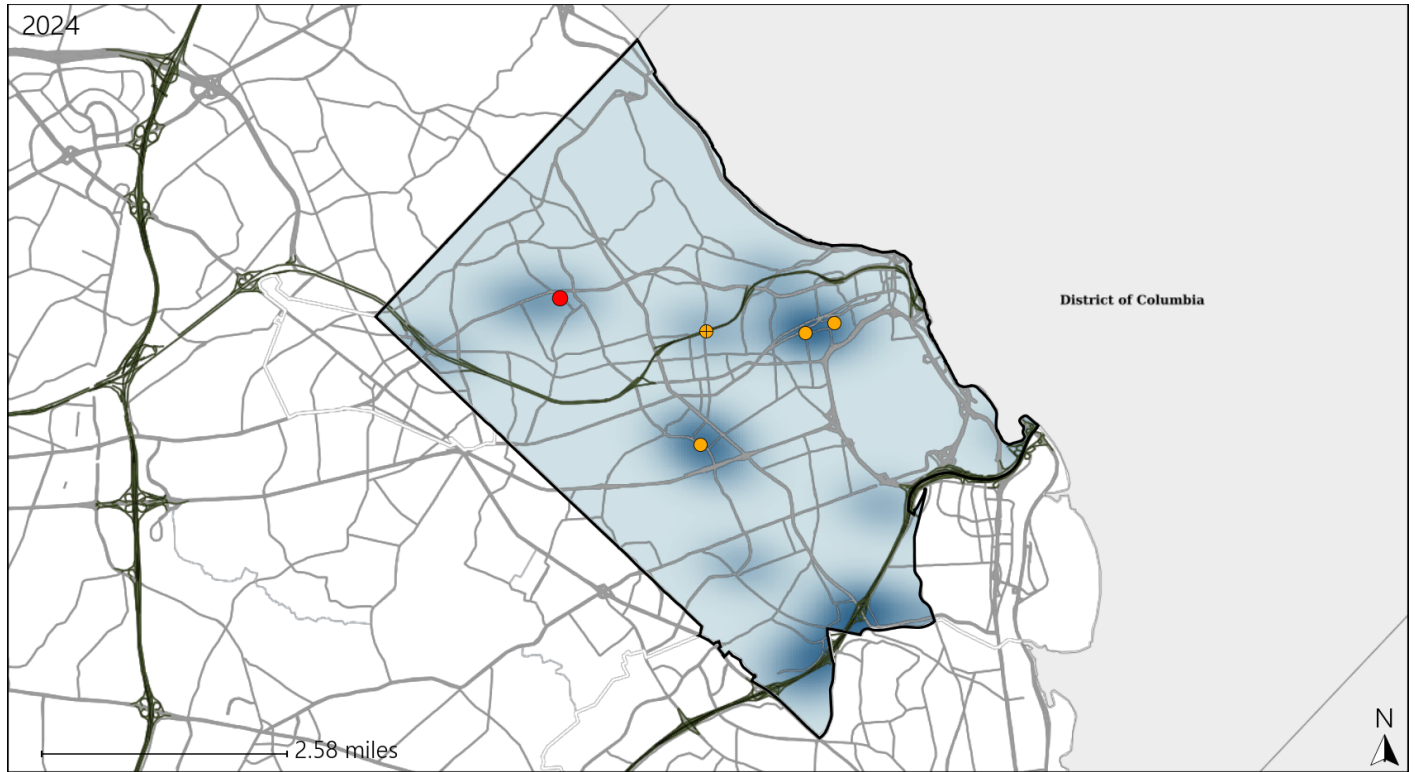


Available Crash Data - Calendar Year (CY)	CY 2021	CY 2022	CY 2023	CY 2024
Total Crashes	1456	1743	1735	1793
Fatal Crashes	4	4	6	2
Injury Crashes	430	489	465	464
Speed-Related Fatal Crashes	1	1	3	1
Percent of Speed-Related Fatal Crashes to Total Fatal Crashes	25%	25%	50%	50%
Speed-Related Injury Crashes	101	107	99	94
Percent of Speed-Related Injury Crashes to Total Injury Crashes	23%	22%	21%	20%

# Virginia Senate District 40 Unrestrained Crash Statistics

Report Generated March, 2025

	Count	Highest Time Period(s)	Highest Day(s)	Highest Month(s)
<b>Fatal Crashes</b>	<b>1</b>	<b>Midnight - 2:59am</b>	<b>Saturday</b>	<b>October</b>
<b>Unrestrained Fatalities</b>	<b>1</b>	<b>(100%)</b>	<b>(100%)</b>	<b>(100%)</b>
<b>Serious Injury Crashes</b>	<b>4</b>	<b>3:00pm - 5:59pm</b>	<b>Monday</b>	<b>December • July</b>
		<b>(50%)</b>	<b>(50%)</b>	<b>(50%)</b>



### Senate District 40 Unrestrained-Related Crashes

Interstate Crashes

- Fatal
- Serious Injury

Non-interstate Crashes

- Fatal
- Serious Injury

The blue gradient represents the density of all unrestrained-related crashes.

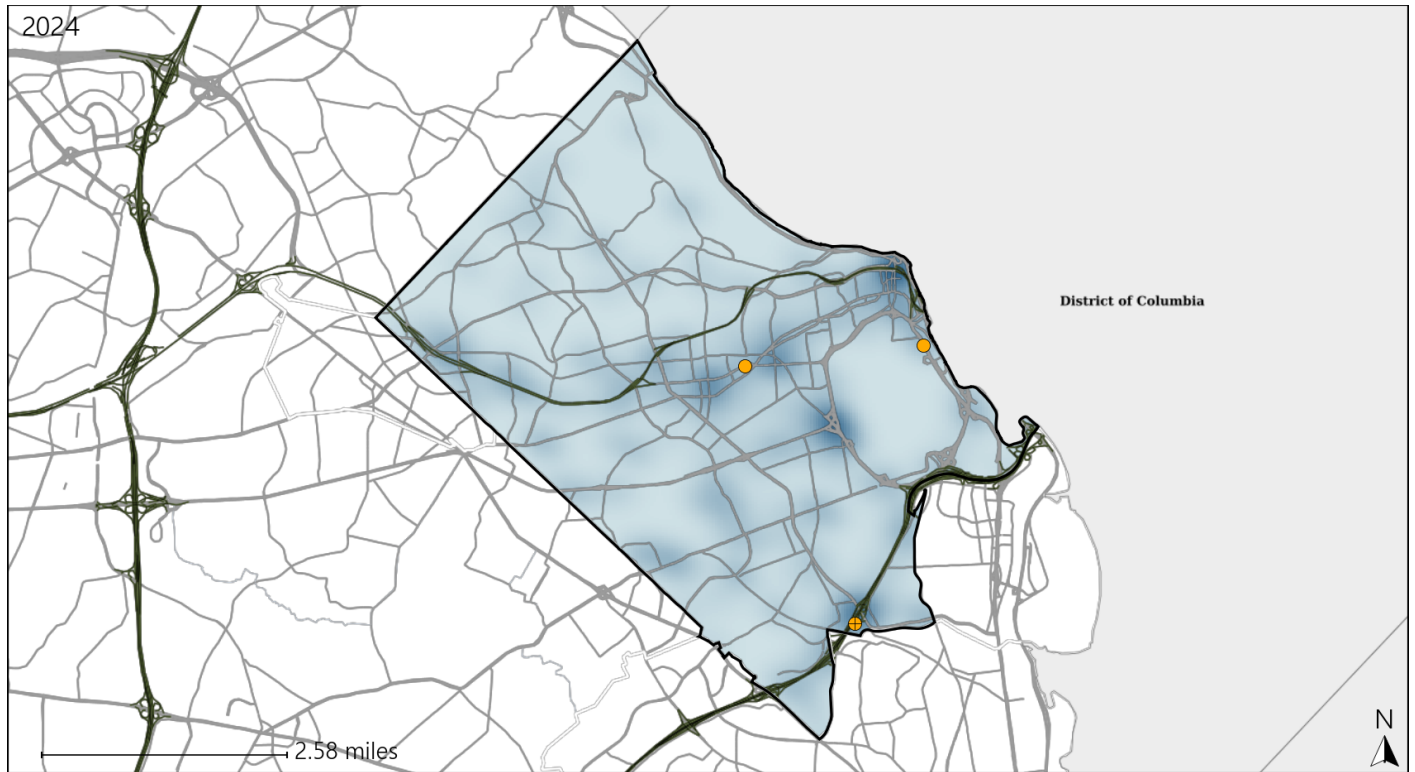


Available Crash Data - Calendar Year (CY)	CY 2021	CY 2022	CY 2023	CY 2024
<b>Total Crashes</b>	<b>1456</b>	<b>1743</b>	<b>1735</b>	<b>1793</b>
<b>Fatalities</b>	<b>4</b>	<b>4</b>	<b>7</b>	<b>2</b>
<b>Injuries</b>	<b>622</b>	<b>728</b>	<b>676</b>	<b>649</b>
<b>Unrestrained Fatalities</b>	<b>2</b>	<b>1</b>	<b>3</b>	<b>1</b>
<b>Percent of Unrestrained Fatalities to Total Fatalities</b>	<b>50%</b>	<b>25%</b>	<b>43%</b>	<b>50%</b>
<b>Unrestrained Injuries</b>	<b>29</b>	<b>27</b>	<b>25</b>	<b>23</b>
<b>Percent of Unrestrained Injuries to Total Injuries</b>	<b>5%</b>	<b>4%</b>	<b>4%</b>	<b>4%</b>

# Virginia Senate District 40 Distracted Driving Crash Statistics

Report Generated March, 2025

	Count	Highest Time Period(s)	Highest Day(s)	Highest Month(s)
<b>Fatal Crashes</b>	0	-	-	-
<b>Resulting Fatalities</b>	0	-	-	-
<b>Serious Injury Crashes</b>	3	3:00am - 5:59am 9:00am - 11:59am (66%)	Saturday • Sunday (66%)	August • February (66%)



## Senate District 40 Distracted Driving-Related Crashes

- |                    |                        |
|--------------------|------------------------|
| Interstate Crashes | Non-interstate Crashes |
| ● Fatal            | ● Fatal                |
| ⊕ Serious Injury   | ● Serious Injury       |

The blue gradient represents the density of all distracted driving-related crashes.



Available Crash Data - Calendar Year (CY)	CY 2021	CY 2022	CY 2023	CY 2024
Total Crashes	1456	1743	1735	1793
Fatal Crashes	4	4	6	2
Injury Crashes	430	489	465	464
Distracted Driving-Related Fatal Crashes	1	0	1	0
Percent of Distracted Driving-Related Fatal Crashes to Total Fatal Crashes	25%	0%	17%	0%
Distracted Driving-Related Injury Crashes	77	92	76	59
Percent of Distracted Driving-Related Injury Crashes to Total Injury Crashes	18%	19%	16%	13%